

Kometa

USER GUIDE

OPERATED BY

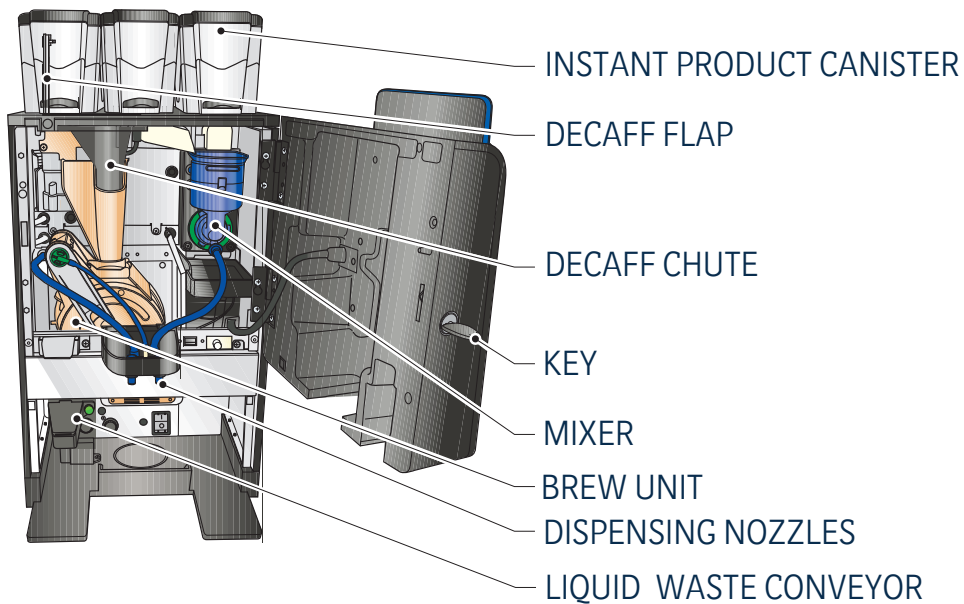
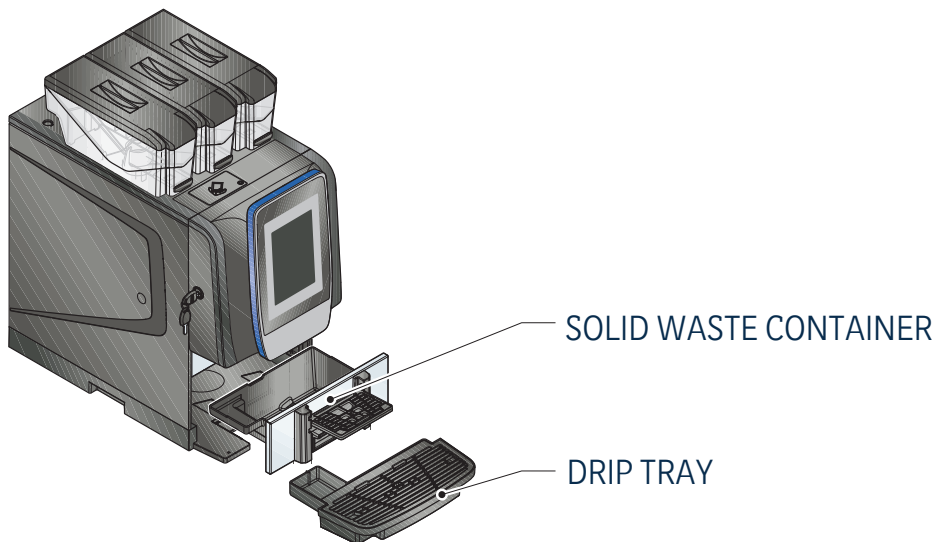
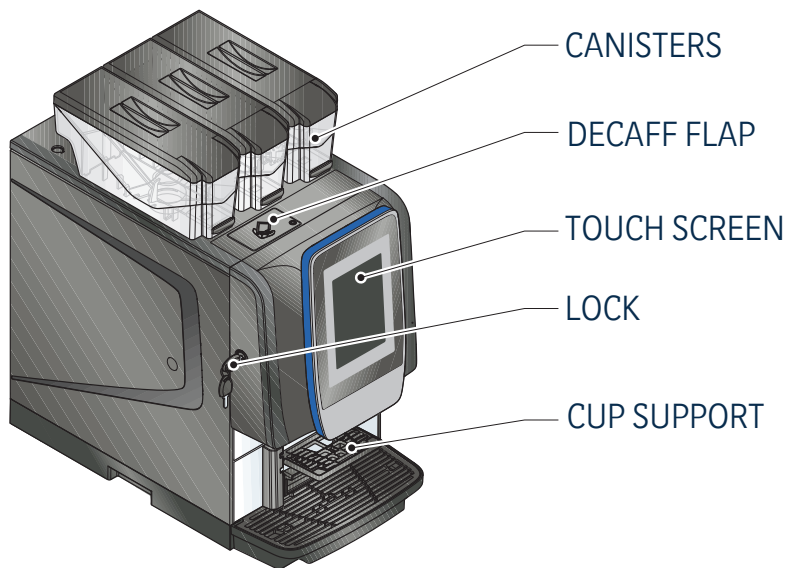
LAVAZZA

PROFESSIONAL

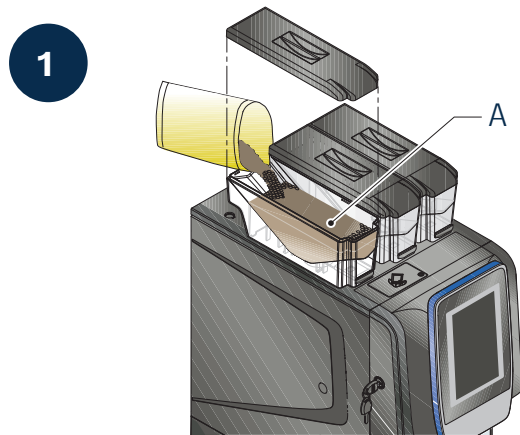
KOMETA



Some simple instructions are supplied here below to load products and clean your machine.

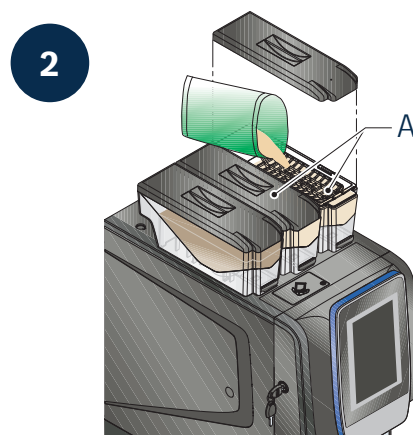


LOADING COFFEE AND INSTANT PRODUCTS



COFFEE BEANS

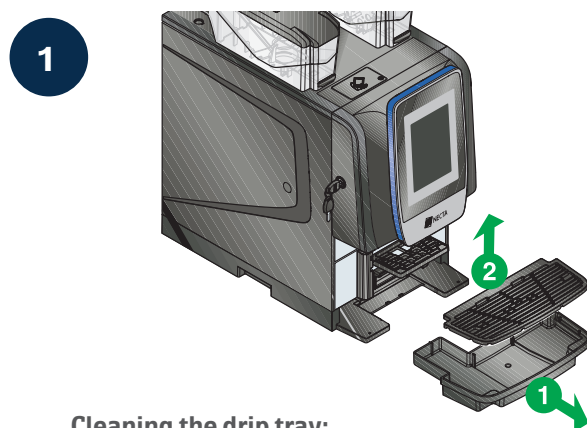
- 1 Open the coffee container lid (A).
- 2 Load the coffee beans into the container.



INSTANT PRODUCTS

- 1 Open the instant powder canister cover (A).
- 2 Load the canister without compressing the instant powder.

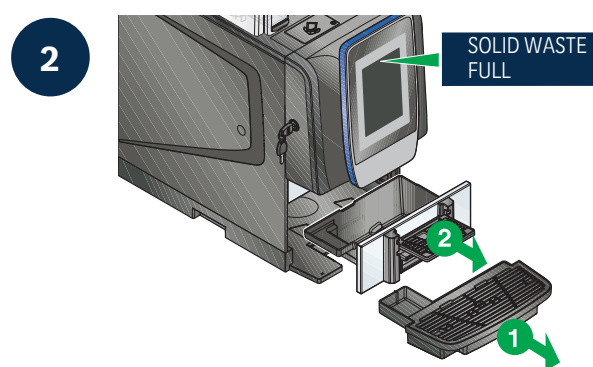
CLEAN WASTE TRAYS



Cleaning the drip tray:

It is recommended to empty and clean the liquid waste tray at regular intervals.

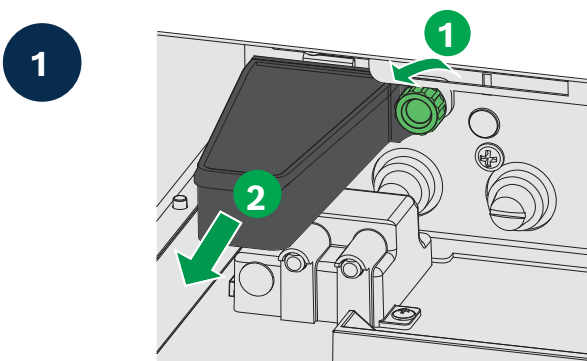
- 1 Extract the tray.
- 2 Remove the grid.
- 3 Empty and wash the tray by using a detergent solution.



Clean the solid waste canister:

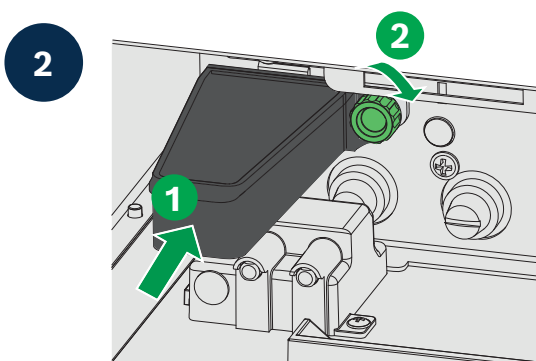
- 1 Remove the liquid waste canister.
- 2 Remove the solid waste canister.
- 3 Empty and wash the solid waste tray with a detergent solution.
- 4 Re-position the trays by acting in the reverse order.
- 5 Confirm the emptying cycle through the function "Daily actions".

CLEAN THE LIQUID WASTE CONVEYOR



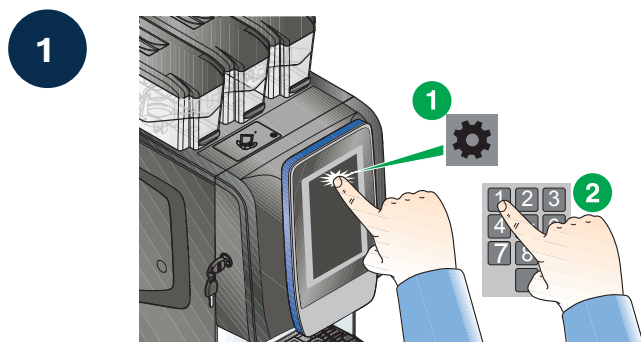
To access the liquid waste conveyor, remove the (liquid and solid) waste trays.

- 1 Unscrew the fastening knurl.
- 2 Pull the conveyor to extract it from the couplings.
- 3 Wash the conveyor with a detergent solution and remove any residue by using pipe cleaners and brushes.
- 4 Rinse and dry the conveyor.



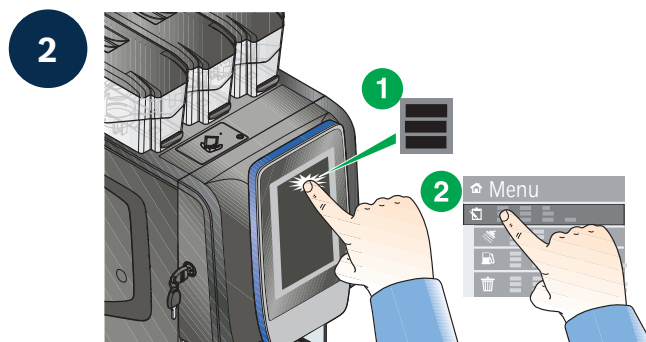
- 1 Insert the conveyor onto the couplings.
- 2 Screw the fastening knurl.
- 3 Re-position the (liquid and solid) waste trays.

FUNCTION “ DAILY ACTIONS ”



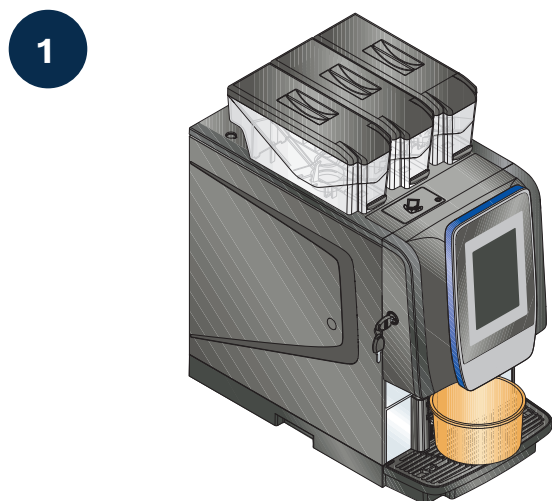
Note down the password you have set up for access

- 1 Touch from the selection screen page to access the menu.
- 2 Enter the password you have set up.

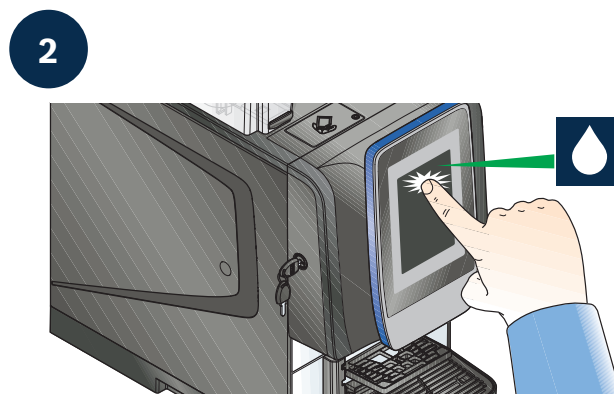


- 1 Touch to access the menu.
- 2 Touch the function "Daily actions".
- 3 Access the function you wish.
 - Wash / rinse
 - Waste reset: to delete the "waste full" signal
- 4 Touch , then, to quit the menu.

WASHING FUNCTION



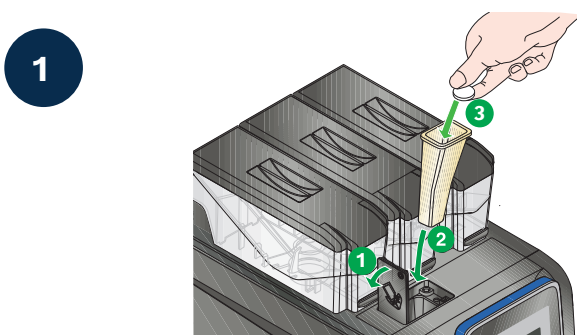
Before starting a wash / rinse cycle, it is recommended to re-position a min. 4-lt canister beneath the nozzles.



Access to the wash / rinse menu

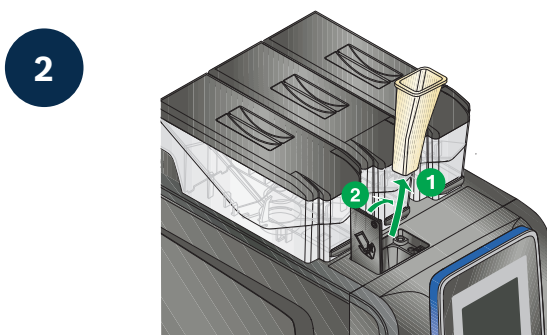
- 1 Touch from the selection screen page.
- 2 Select the wash or rinse cycle to be carried out.

BREW UNIT WASH



Only use products specifically conceived for coffee machines. The detergent chute is only to be used for washing the brew unit.

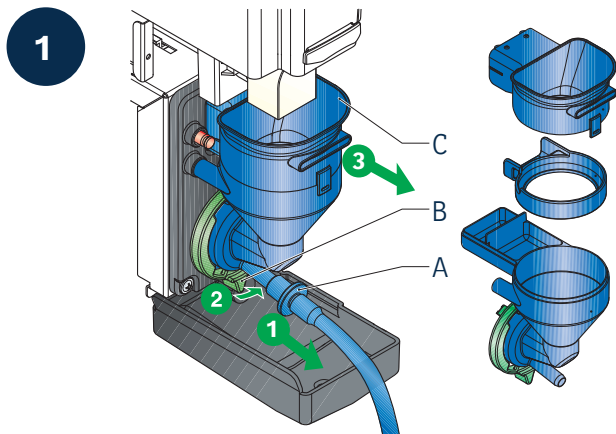
- 1 Open the decaff flap.
- 2 Insert the detergent chute into the decaff chute.
- 3 Pour the detergent into the chute by following the dosage instructions on the corresponding package.
- 4 Start the wash cycle of the brew unit.



Remove the detergent chute at the end of the wash cycle.

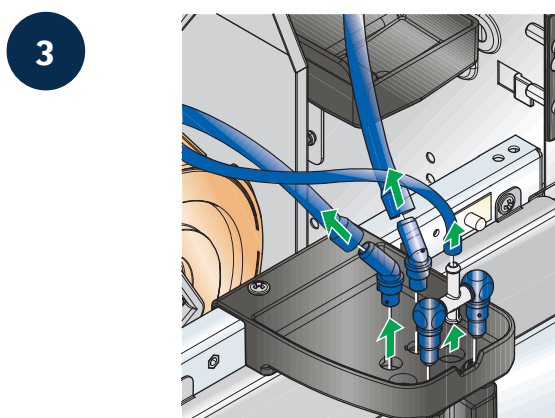
- 1 Remove the detergent chute.
- 2 At the end of the cycle start the rinse cycle of the brew unit to remove any detergent residue.

CLEAN MIXERS AND NOZZLES

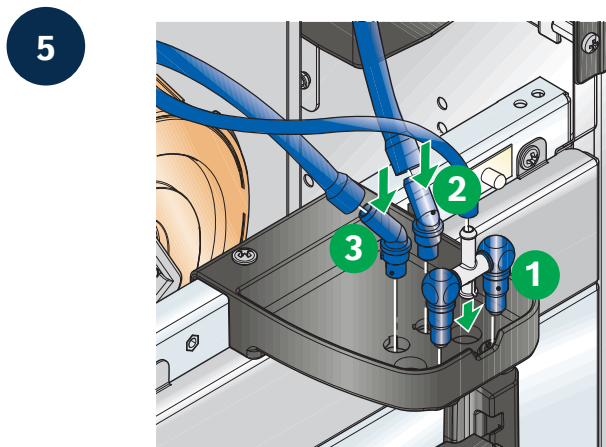


Disassemble the mixer

- 1 Detach the pipe (A) from the mixer.
- 2 Turn the lever (B) counterclockwise.
- 3 Remove the mixer (C).
- 4 Separate all components of the mixer.

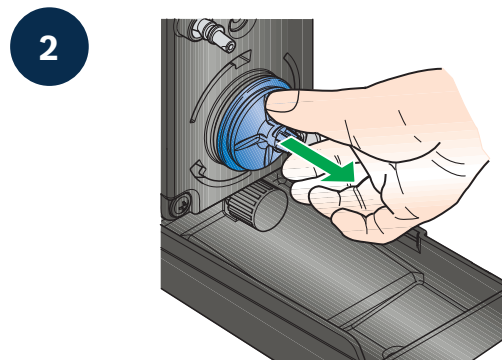


- 1 Detach the pipes from the nozzles of instant drinks and the flow dividing nozzle.
- 2 Remove the flow dividing nozzle and the nozzles from the support



Reassemble the nozzles

- 1 Insert the nozzles in the support and re-connect the pipes.



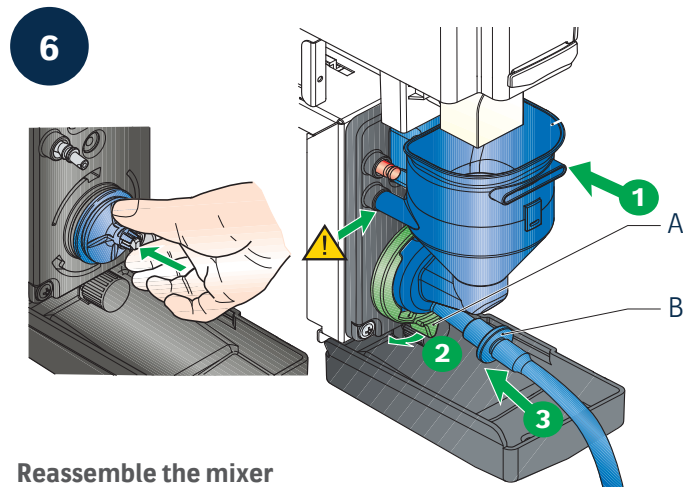
Disassemble the mixer

- 1 Pull the mixer impeller to disassemble it.



Wash the components

- 1 Wash all the components by using a detergent solution; visible residues and films are to be removed mechanically by using pipe cleaners and/or brushes.
- 2 Rinse the parts under a running water jet abundantly
Dry all the parts carefully, above all the mixer



Reassemble the mixer

- 1 Re-position the mixer impeller and push to hook it.
- 2 Reassemble all mixer components and make sure that the water funnel is properly inserted.
- 3 Turn the lever (A) clockwise to secure the mixer.
- 4 Re-connect the pipe (B) with the mixer.