



## Evoca Maestro B2C Installation Requirements

LRE-03811  
Rev O  
16/06/22

# Plumbing Requirements

All Machines are supplied and installed with:

- Anti Flood Device.
- WRAS approved hoses fitted with backflow devices to comply with Water Supply (Water fittings) Regulations 1999

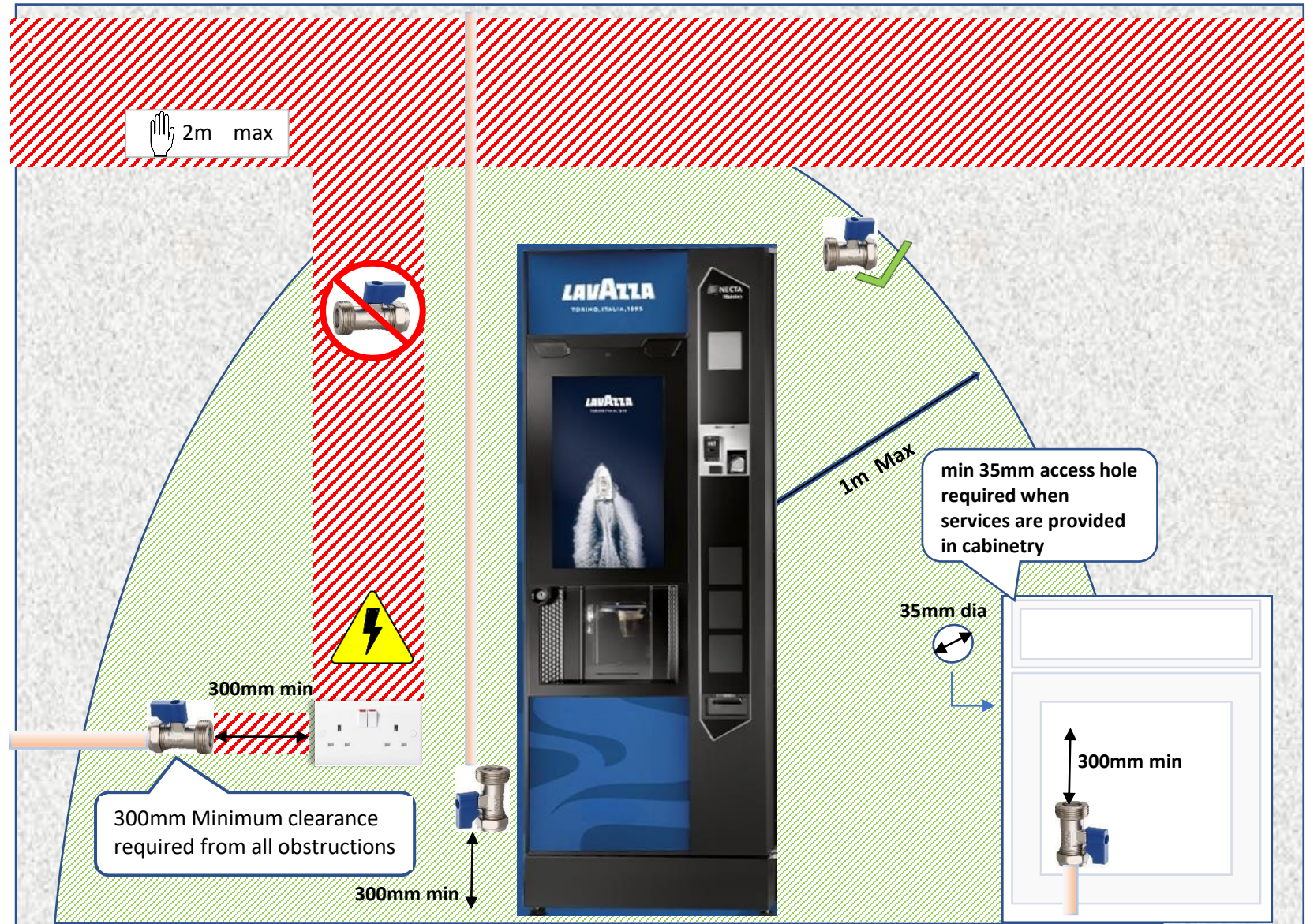
- Lavazza installers do not provide or make adjustments to plumbing fittings.
- Only Lavazza supplied hoses are to be used.

15mm water supply terminating on a  $\frac{3}{4}$ " BSP isolation valve to be provided in advance of installation

Anti Flood Device and machine hose supplied by Lavazza Professional



- Potable mains drinking water.
- Water pressure between 0.5 – 8.5 bar.
- Termination within 1 metre of the machine
- Termination no higher than 2 metres from floor level
- Termination to be a WRAS approved ¾" BSP isolation valve
- 1x Isolation valve required for **each** machine
- No water connections directly above a power supply
- 300mm Clearance from any obstructions, ( including electrical sockets)
- Isolation valve must be accessible for installation and maintenance.
- Pipe clips to extend min. 30mm from wall.



# Acceptable termination 15mm Isolation Valves



**Each machine or appliance must be supplied with a separate WRAS approved isolation valve.**

If in doubt, seek advice from a WRAS approved plumbing installer.

Any deviations from this installation document may result in a failed installation charge, please contact the Lavazza technical helpdesk for written agreement on any proposed alterations to this installation specification prior to delivery.

# Electrical Requirements

## Power Specification :

Input Voltage: 230/240V

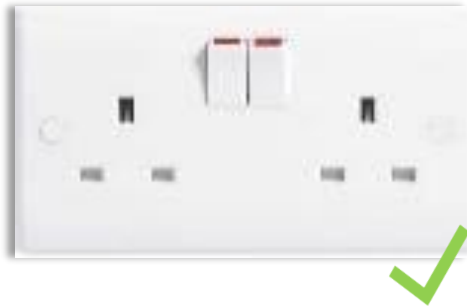
Input Frequency : 50/60Hz

Rated Power : 2500W

## Connection.



The machine is fitted with a moulded 13A UK 3-pin plug



- **Electrical supply** 220/240Vac single phase terminated **within 1 metre** of the machine by an **accessible** switched socket of minimum 13Amp rating.
- This should be wall mounted but under no circumstances to be positioned directly underneath the water supply. Services must be accessible without moving the machine.
- **Extension leads** are not recommended, customer will be held liable for the risks that come with their use
- **Socket Adapters** must not be used.

- **Hardwiring.** If hard wiring is a site requirement, this is to be performed at customers cost and a qualified electrician made available at the time of installation.

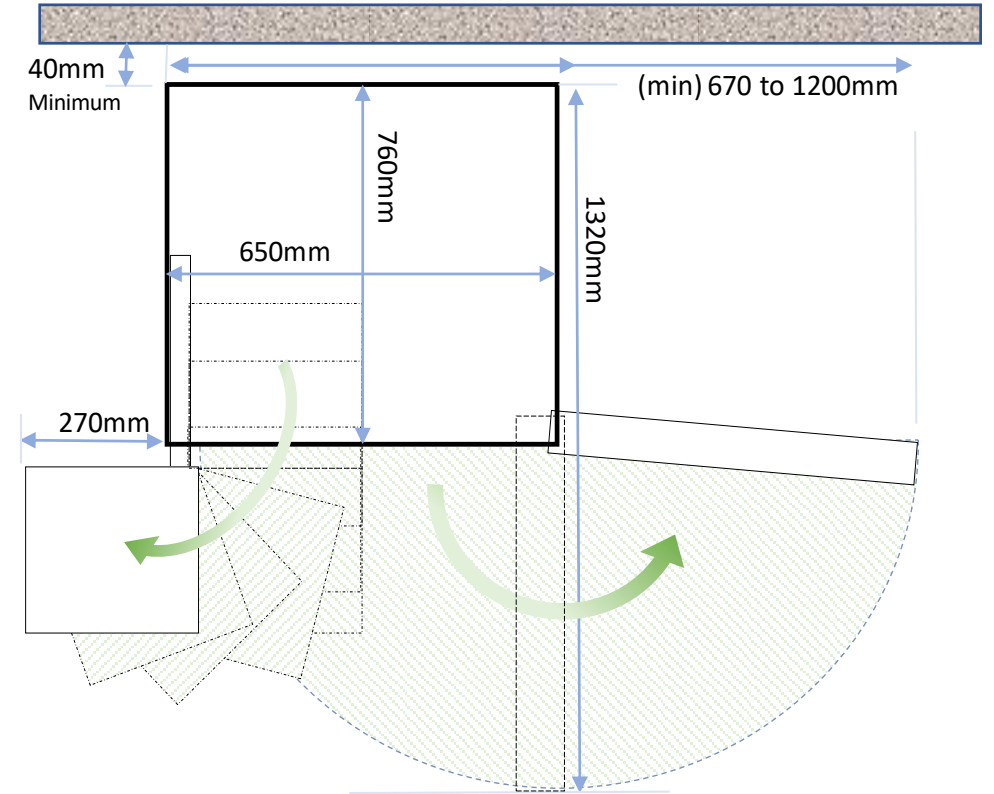


**If in doubt, seek advice from a qualified electrical installer**



# Machine Placement and Environment

- Maestro machines are **IPX0** rated and **must be positioned in an indoor environment** that will **remain dry at all times**.
- Machine **must be protected from temperatures below 5°C and in excess of 34°C**
- Machines should be sited to be easily accessible and not constitute an obstruction
- The connection of electrical and water services must not present a trip hazard
- The machine should not be positioned in a chemically corrosive atmosphere
- Machines should be sited in a food safe environment , free from dust, fumes , chemicals and pests.
- Allowances must be made for safe door opening and accessibility for servicing



**Any deviations from this installation document may result in a failed installation charge, please contact the Lavazza technical helpdesk for written agreement on any proposed alterations to this installation specification prior to delivery.**