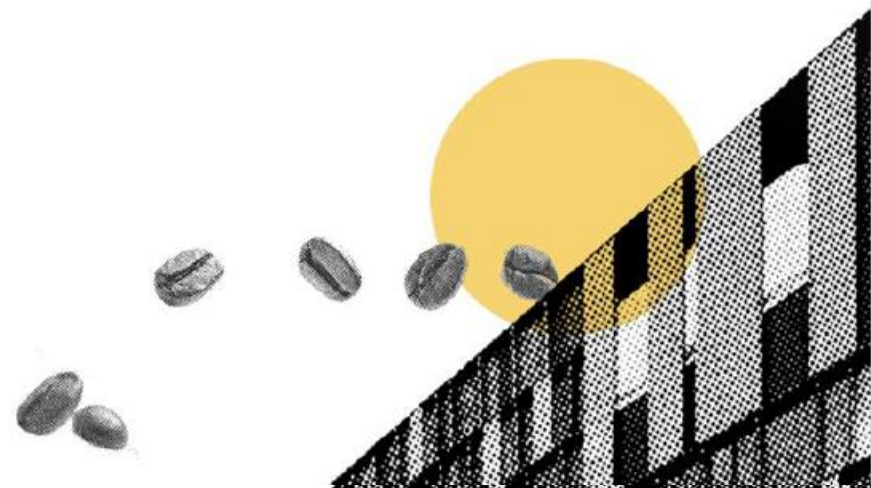




Evoca Krea Touch B2C Installation Requirements

Rev O
16/06/22



Plumbing Requirements

All Machines are supplied and installed with:

- Anti Flood Device.
- WRAS approved hoses fitted with backflow devices to comply with Water Supply (Water fittings) Regulations 1999

- Lavazza installers do not provide or make adjustments to plumbing fittings.
- Only Lavazza supplied hoses are to be used.

15mm water supply terminating on a $\frac{3}{4}$ " BSP isolation valve to be provided in advance of installation

Anti Flood Device and machine hose supplied by Lavazza Professional

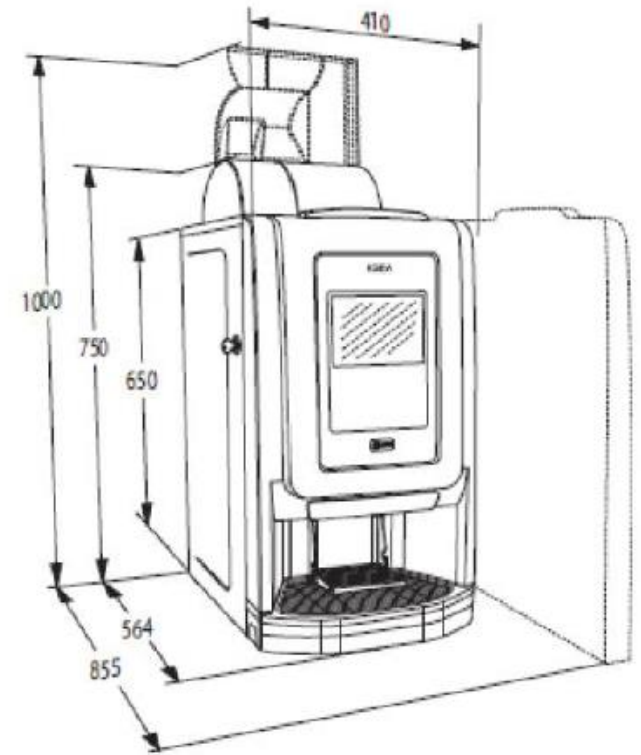


Machine Placement and Environment

- Krea Touch machines are IPX0 rated and must be positioned in an indoor environment that will remain dry at all times.
- Machine must be protected from temperatures below 5°C and in excess of 34°C
- Machines should be sited to be easily accessible and not constitute an obstruction
- The connection of electrical and water services must not present a trip hazard
- The machine should not be positioned in a chemically corrosive atmosphere
- Machines should be sited in a food safe environment , free from dust, fumes , chemicals and pests.
- Allowances must be made for safe door opening and accessibility for servicing



DIMENSIONS



Weight
41 Kg

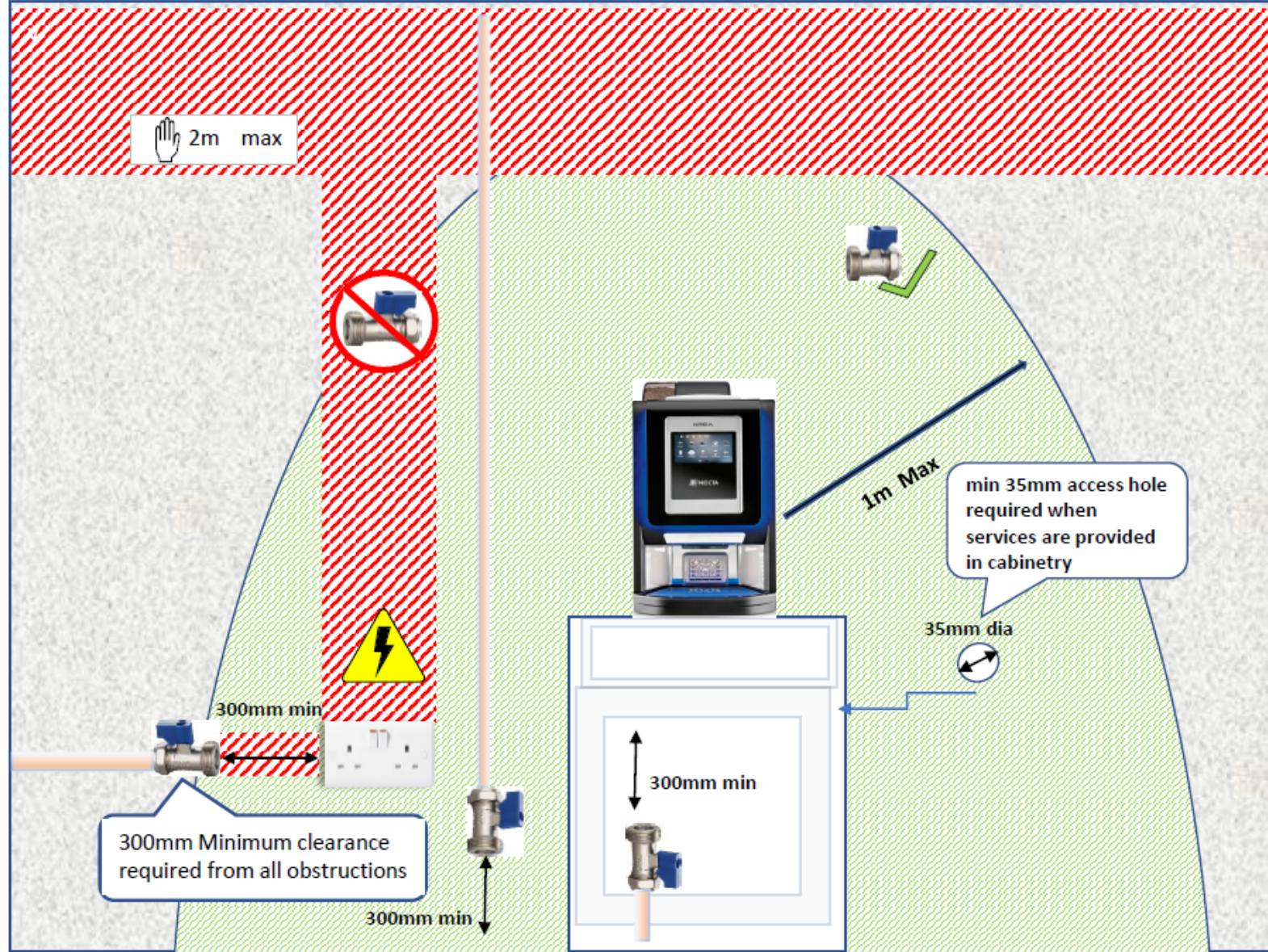
DIMENSIONS

Height	750 mm
Height (instant model)	650 mm
Width	410 mm
Depth	564 mm
Depth with door open	855 mm
Weight	41 Kg

*The height of the machine can increase with adjustable feet

Any deviations from this installation document may result in a failed installation charge, please contact the Lavazza technical helpdesk for written agreement on any proposed alterations to this installation specification prior to delivery.

- Potable mains drinking water.
- Water pressure between 1.0 – 8.5 bar.
- Termination within 1 metre of the machine
- Termination no higher than 2 metres from floor level
- Termination to be a WRAS approved 3/4" BSP isolation valve
- 1x Isolation valve required for **each** machine
- No water connections directly above a power supply
- 300mm Clearance from any obstructions, (including electrical sockets)
- Isolation valve must be accessible for installation and maintenance.
- Pipe clips to extend min. 30mm from wall.



Taste and Scale Filter



Acceptable termination 15mm Isolation Valves



Each machine or appliance must be supplied with a separate WRAS approved isolation valve.

If in doubt, seek advice from a WRAS approved plumbing installer.

Any deviations from this installation document may result in a failed installation charge, please contact the Lavazza technical helpdesk for written agreement on any proposed alterations to this installation specification prior to delivery.

Electrical Requirements

Power Specification :

Input Voltage: 230/240V

Input Frequency : 50/60Hz

Rated Power : 2500W

Connection.



The machine is fitted with a moulded 13A UK 3-pin plug



- **Electrical supply** 220/240Vac single phase terminated **within 1 metre** of the machine by an **accessible** switched socket of minimum 13Amp rating.
- This should be wall mounted but under no circumstances to be positioned directly underneath the water supply. Services must be accessible without moving the machine.
- **Extension leads** are not recommended, customer will be held liable for the risks that come with their use
- **Socket Adapters** must not be used.

- **Hardwiring.** If hard wiring is a site requirement, this is to be performed at customers cost and a qualified electrician made available at the time of installation.



If in doubt, seek advice from a qualified electrical installer

Counter Top Holes

- The supplied machine is self-contained.
- Cut outs for services , dry and wet waste are optional as site requirements dictate.

