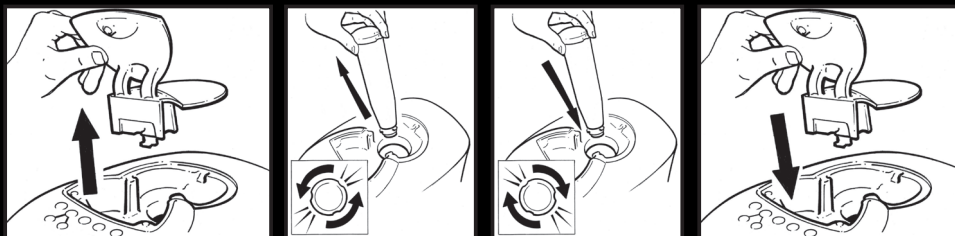


FLAVIA® Creation 200™ WATER FILTER REPLACEMENT



Your Brewer is fitted with a Water Filter to ensure the water used in brewing your beverages is of optimal quality. To maintain the quality of beverages brewed, while protecting and extending the life of your Brewer, you will need to replace this filter periodically. The frequency of replacement depends on the number of drinks brewed.

The recommended replacement frequency is approximately every 1600 beverages or six months whichever comes first.



Note

At the top of the water filter cartridge there is a rotating 'date cap' which may be set to serve as a reminder of the anticipated replacement date.

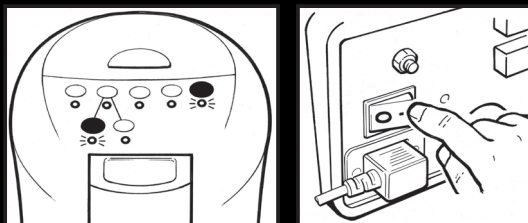
Step 1: Remove the water filter covers to access the water filter. Remove the filter by turning it counter-clockwise. Discard the used filter.


Step 2: Insert the replacement filter and rotate clockwise to engage with the bayonet fitting inside the cold water reservoir. Replace filler lid.

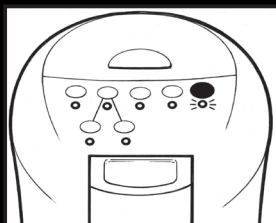


Step 3: The new filter will need to be 'Flushed'. Remove the drip tray from the Brewer and place a large container in the dispense area.

Step 4: If the Brewer is set to 'Manual Fill' operation, ensure that the Brewer is filled with water up to the 'MAX' level, to ensure that there is enough water in the Brewer to complete the 'Flush' cycle.




Step 5: Turn the Brewer off. Press and hold the 'HOT WATER' and 'LARGE CUP' buttons. Turn the Brewer back on whilst continuing to hold the two buttons whilst the Brewer powers up. After the Brewer has powered up, release the two buttons, the 'CALL OPERATOR' symbol  and 'HOT WATER' button will now illuminate.



Step 6: Now Press the 'HOT WATER' button to begin the FLUSH cycle. The Brewer will start to pump water, and after several seconds, water will be dispensed into the container. The water jet may be seen to 'splutter' for a short while at the start, this is normal.

Note If needed, the Flush cycle can be paused and re-started by pressing the 'HOT WATER' button.

The Brewer will automatically stop pumping after about 2 minutes after which the Flush cycle is complete. The Brewer will pump approximately 1,7L of water into the collecting container.

The system is now Flushed and will begin to heat the water. The 'PLEASE WAIT' symbol will flash while the water heats.  When complete the 'Drinks Selection' lights will illuminate. Your Brewer is now ready to continue making drinks.