

Quick Reference Guide

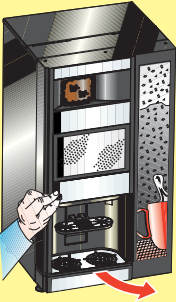
ES FB 9100



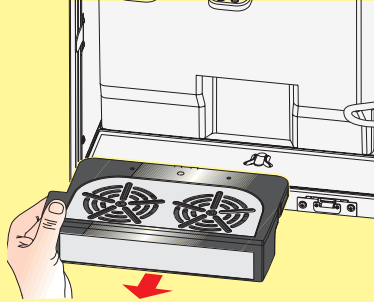
WITTENBORG

U0502EN01

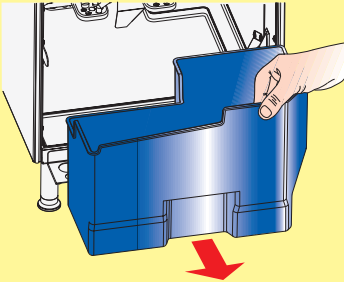
Easy and thorough cleaning



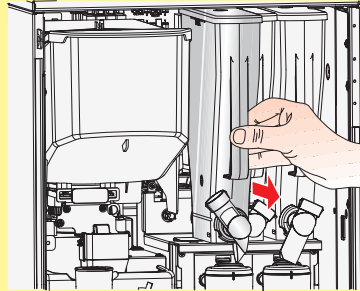
Open the door by turning the key clock-wise.



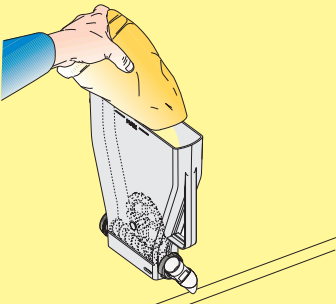
Remove the drip tray. Take off the lid and empty the drip tray. Clean the sensor on the lid.



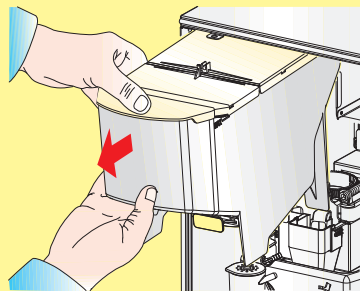
Pull out the waste bucket.



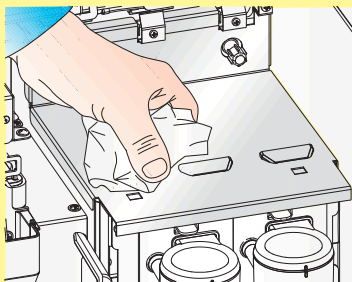
Close the outlet pipes of the instant canisters by pushing the pipes upwards. Pull out the canisters.



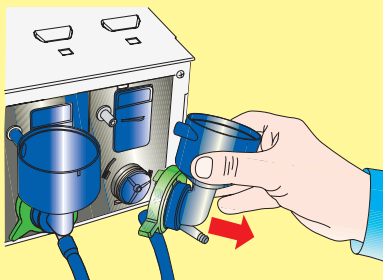
Place the canisters on a table and fill them with ingredients.



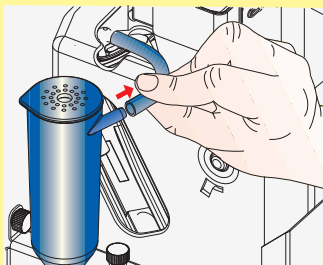
Close the outlet for the coffee beans by pushing the green plate. Pull out the coffee canister.



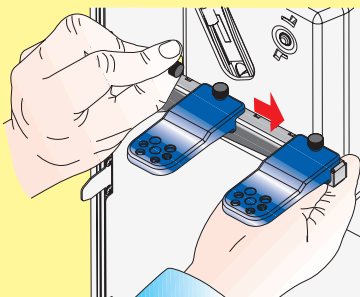
Clean the instant canister table.



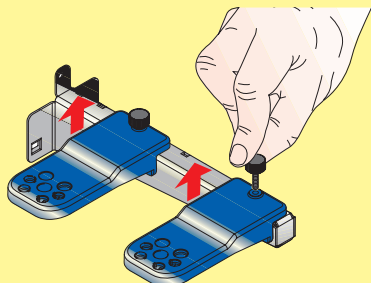
Remove the mixing bowls, powder traps and whippers.



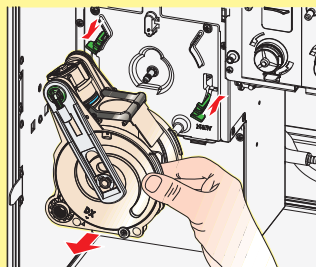
Remove all hoses from the diffuser and the outlets.



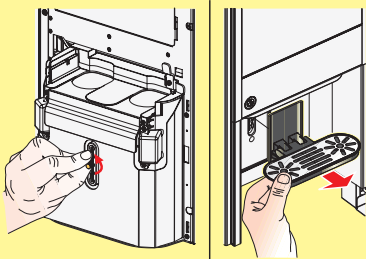
Release the bolt and remove the frontal bar.



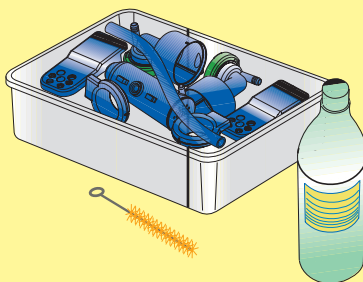
Release the thumbscrews and remove the outlet holders.



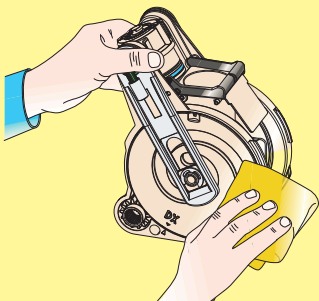
Remove all hoses, the cover in front of the brewer and coffee funnel. Remove the brewer.



Unscrew the knurl that fix external drip tray, clean external drip tray with a wet wipe.



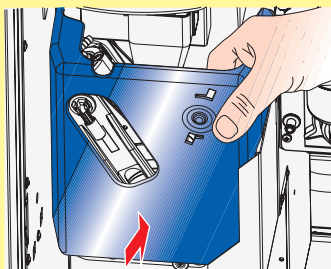
Leave all parts to soak for at least 15 minutes in a container filled with hot water and a mild detergent. Rinse with clean water.



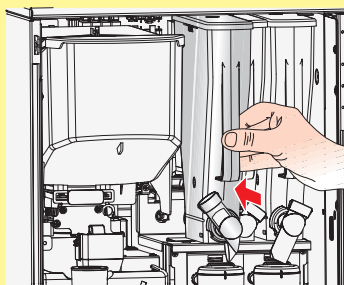
Rinse all parts thoroughly with clean hot water.



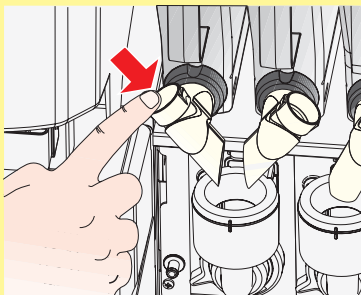
Make sure that no traces of dirt or detergent are left on the parts. Wipe all parts with a dry cloth.



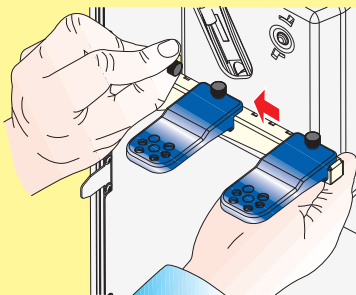
Reassemble and remount all parts.



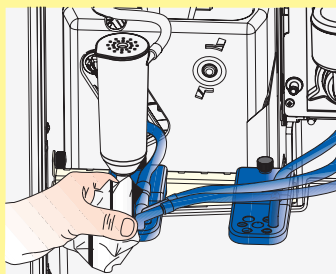
Replace the instant canister



Open the outlet pipes by pushing the pipes down.



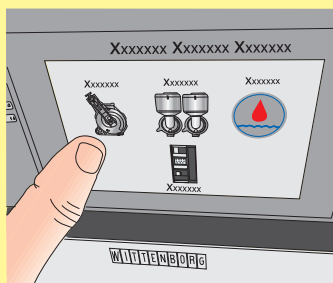
Remount the frontal bar and outlet holders.



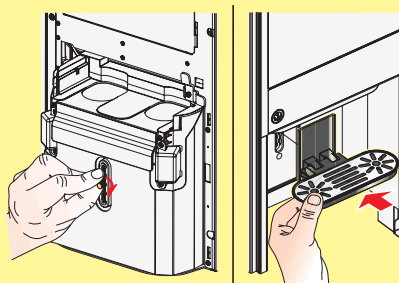
Pay attention to placing the nozzles in the correct position.



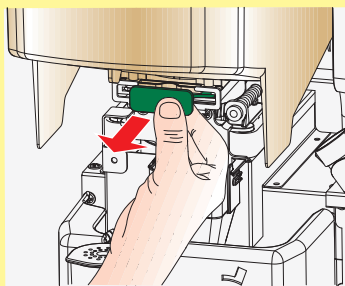
For rinsing: close the door (or insert the yellow service key), select 'Wittenborg' - 'Daily action' and 'Cleaning'.



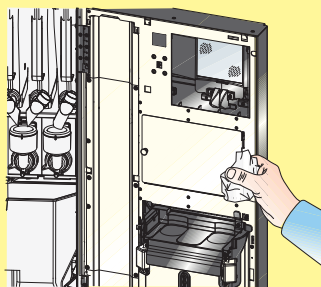
Choose the dedicated rinsing program.



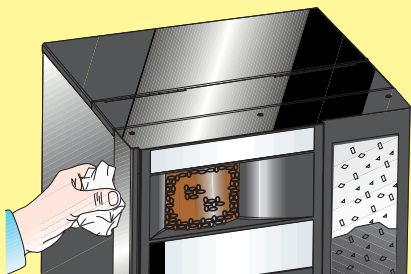
Replace the cupholder.



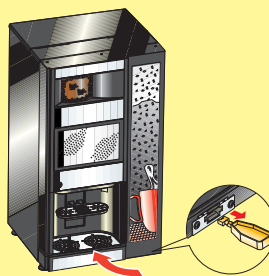
Reopen the coffee beans canister by pulling out the green plate.



Clean the door internally and externally with a clean wet cloth.



Clean the entire cabinet with a wet cloth.



Fill in the 'Cleaning Record Card'. Remove the yellow service key and close the door.

HACCP Guidelines



Descaling

- Depending on the hardness of the water, the filter and packing must be cleaned for every 25,000 drinks, even though the machine might still work.

Filing

- When opening the bag of coffee, write the date on the bag.
- File the 'best before' date from the bag used to fill the machine.
- File the filled-in 'Cleaning Record Card'.

Training

- Train the staff on HACCP guidelines.
- Implement the activities in the work routines.
- For further questions, please contact your service representative.

Cleaning Record Card

Declaration: This machine has been cleaned in accordance with the cleaning instructions.

[illegible]

Monthly inspection carried out by the cleaning supervisor

Date	
Signature	
Comments	

**Keep this card together with the 9100 machine
(and file it when filled in)**